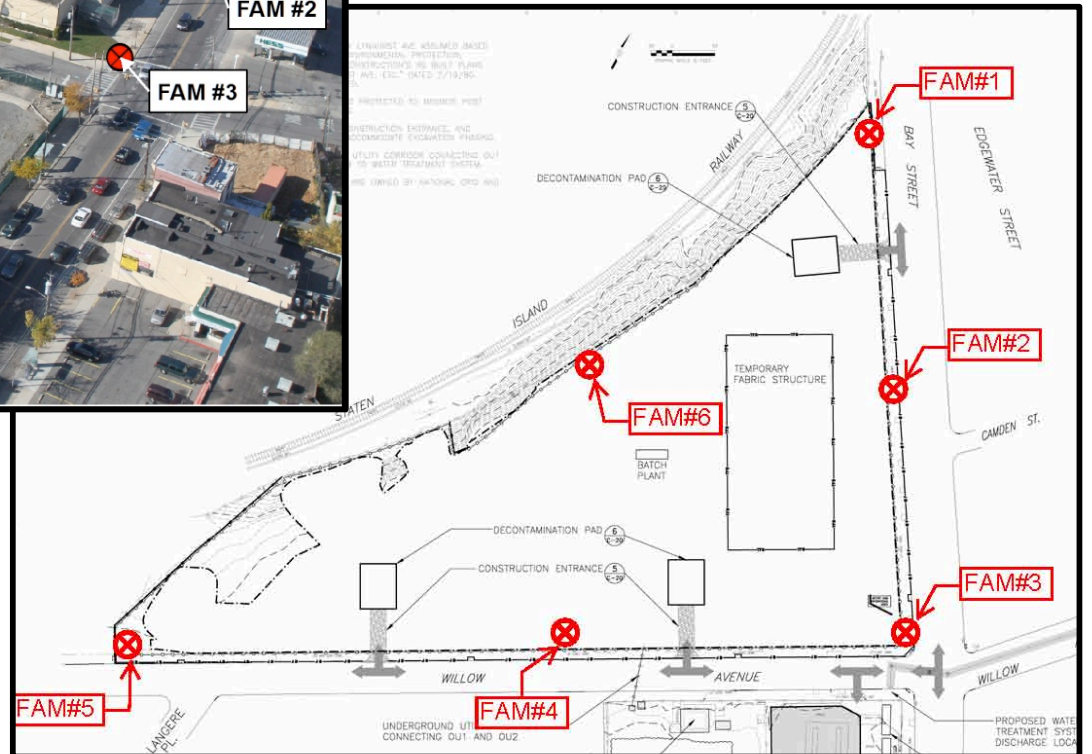


Clifton MGP OU2 Site Remediation
Public Availability Session
Slides and Materials

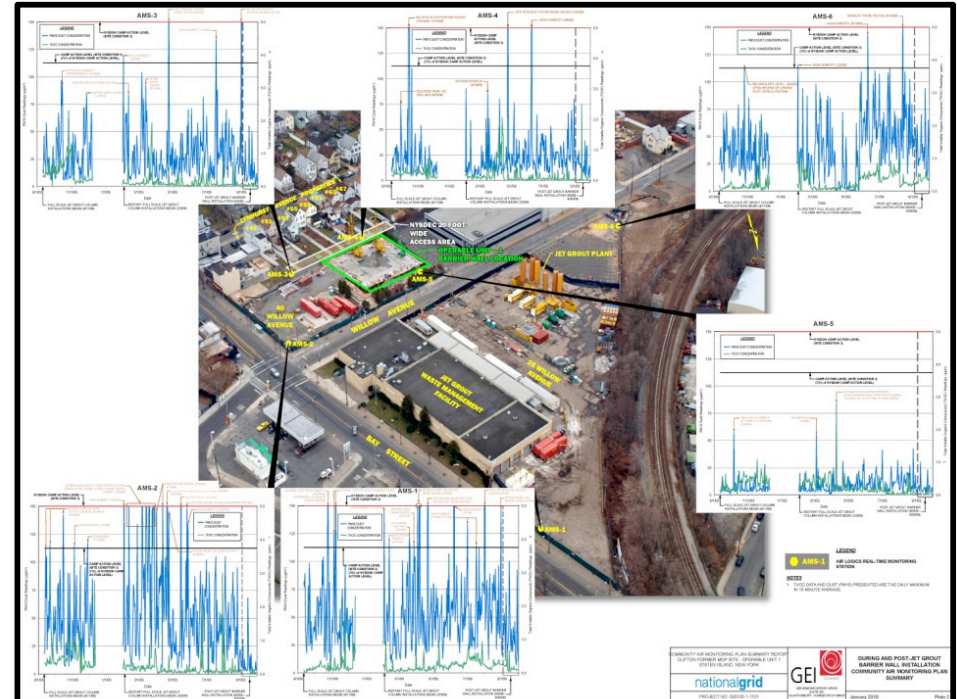
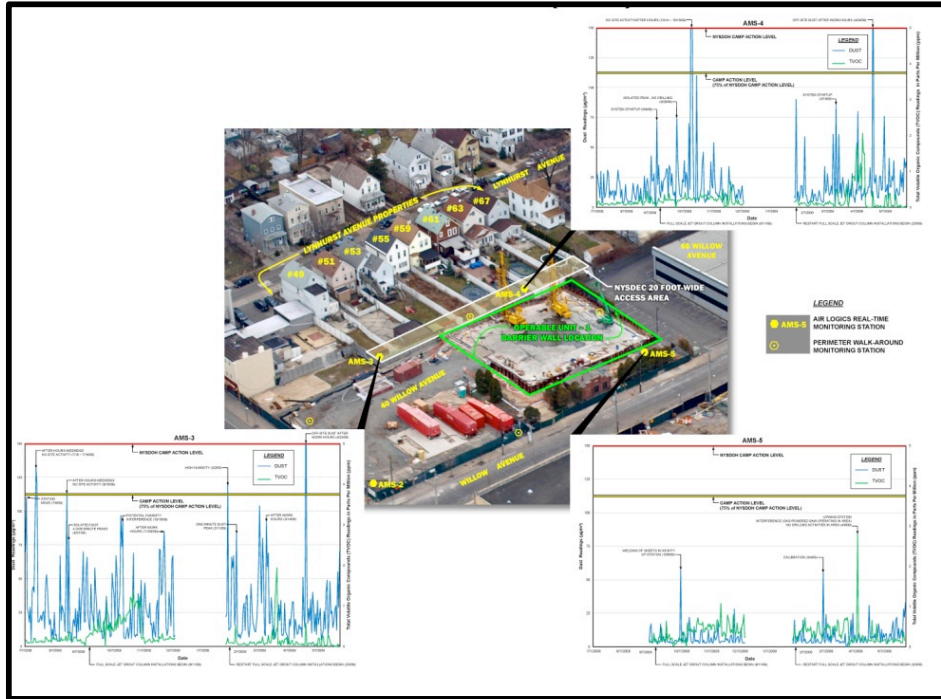
M.L. Lindenmeyer-High School
December, 2011

Station 1:
Health Issues and Questions

Perimeter Air Monitoring



Previous OU-1 CAMP Data

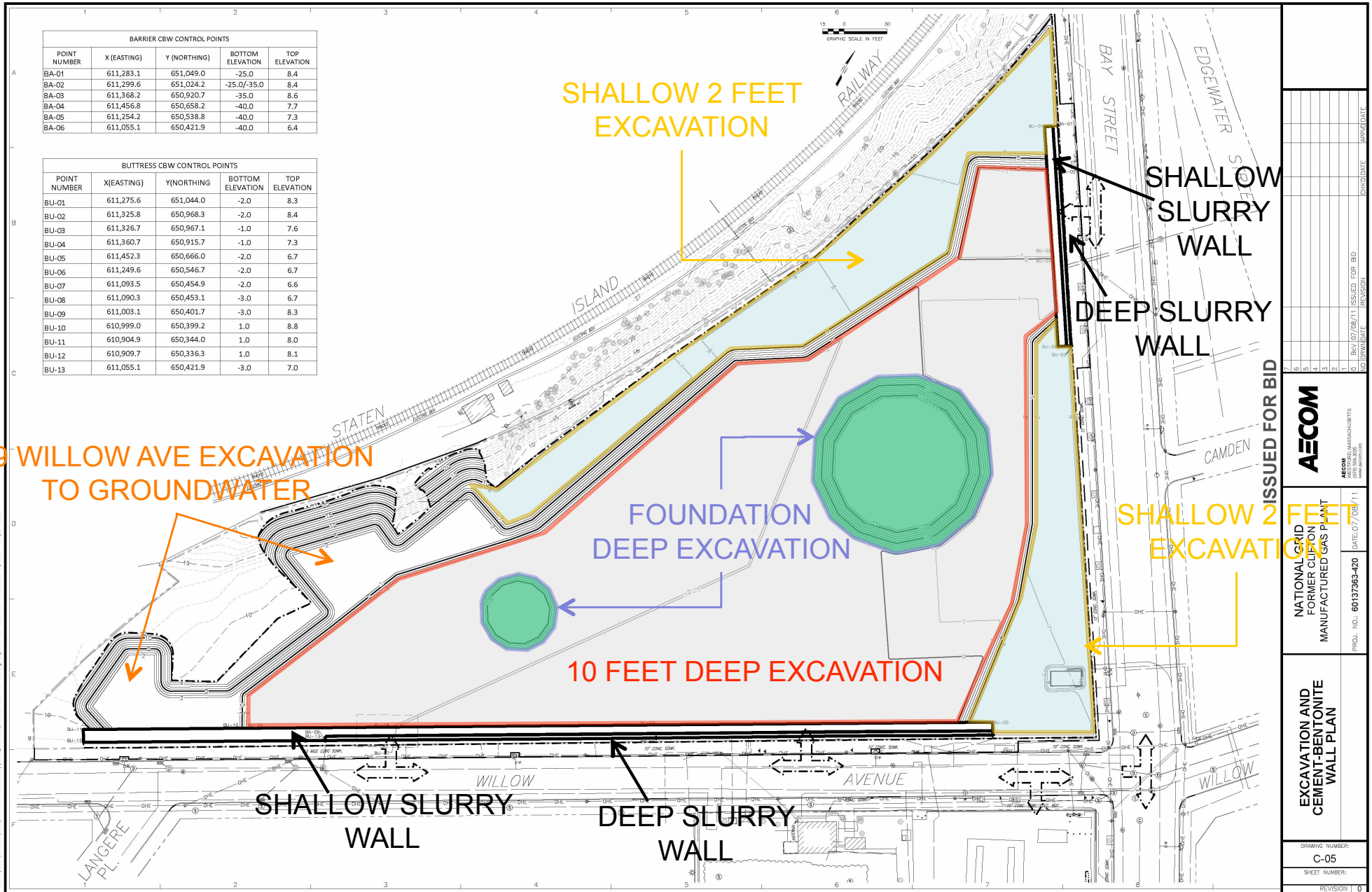


Station 2: Site Construction and Schedule

Site Prep/Site Layout



Slurry Wall & Excavation Location



BARRIER CBW CONTROL POINTS				
POINT NUMBER	X (EASTING)	Y (NORTHING)	BOTTOM ELEVATION	TOP ELEVATION
BA-01	611,283.1	651,049.0	-25.0	8.4
BA-02	611,299.6	651,024.2	-25.0/-35.0	8.4
BA-03	611,368.2	650,920.7	-35.0	8.6
BA-04	611,456.8	650,658.2	-40.0	7.7
BA-05	611,254.2	650,538.8	-40.0	7.3
BA-06	611,055.1	650,421.9	-40.0	6.4

BUTTRESS CBW CONTROL POINTS				
POINT NUMBER	X(EASTING)	Y(NORTHING)	BOTTOM ELEVATION	TOP ELEVATION
BU-01	611,275.6	651,044.0	-2.0	8.3
BU-02	611,325.8	650,968.3	-2.0	8.4
BU-03	611,326.7	650,967.1	-1.0	7.6
BU-04	611,360.7	650,915.7	-1.0	7.3
BU-05	611,452.3	650,666.0	-2.0	6.7
BU-06	611,249.6	650,546.7	-2.0	6.7
BU-07	611,093.5	650,454.9	-2.0	6.6
BU-08	611,090.3	650,453.1	-3.0	6.7
BU-09	611,003.1	650,401.7	-3.0	8.3
BU-10	610,999.0	650,399.2	1.0	8.8
BU-11	610,904.9	650,344.0	1.0	8.0
BU-12	610,909.7	650,336.3	1.0	8.1
BU-13	611,055.1	650,421.9	-3.0	7.0

ISSUED FOR BID

AECOM

NATIONAL GRID
FORMER CLIFTON PLANT
MANUFACTURED GAS PLANT

EXCAVATION AND
CEMENT-BENTONITE
WALL PLAN

DRAWING NUMBER:
C-05

SHEET NUMBER:

REVISION | 0

PROJ. NO.: 60137363-420 | DATE: 07/08/11

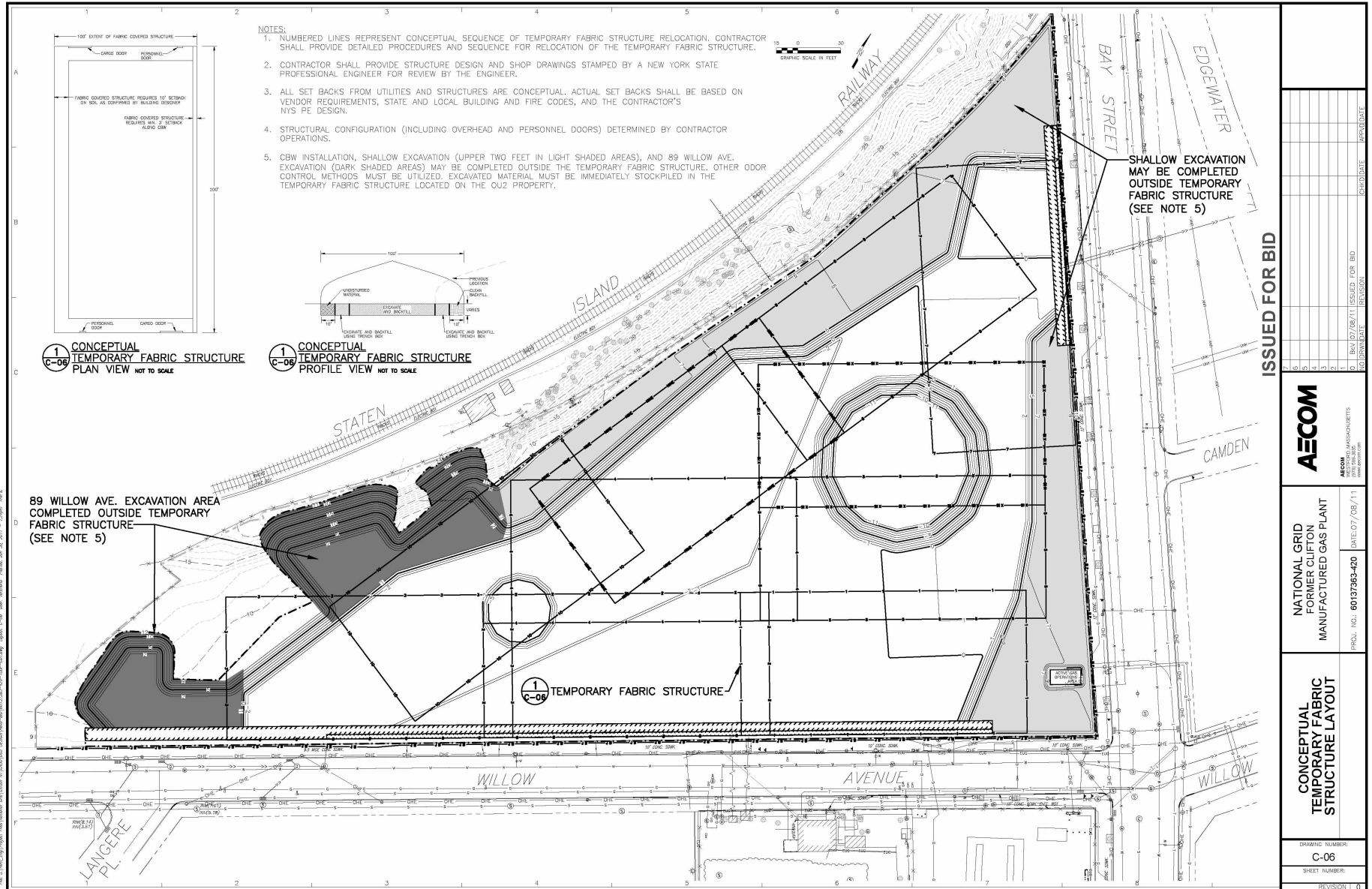
AECOM
100 WEST WASHINGTON STREET
SUITE 2000
NEW YORK, NY 10036

NO. | DATE | DESCRIPTION | APPROVED

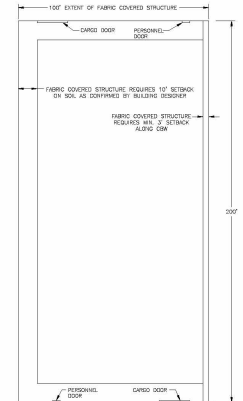
0 | 07/08/11 | ISSUED FOR BID |

1 | 07/08/11 | REVISION |

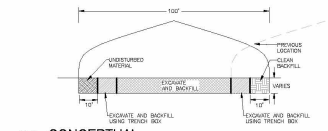
Excavation and Tent Layout



- NOTES:**
1. NUMBERED LINES REPRESENT CONCEPTUAL SEQUENCE OF TEMPORARY FABRIC STRUCTURE RELOCATION. CONTRACTOR SHALL PROVIDE DETAILED PROCEDURES AND SEQUENCE FOR RELOCATION OF THE TEMPORARY FABRIC STRUCTURE.
 2. CONTRACTOR SHALL PROVIDE STRUCTURE DESIGN AND SHOP DRAWINGS STAMPED BY A NEW YORK STATE PROFESSIONAL ENGINEER FOR REVIEW BY THE ENGINEER.
 3. ALL SET BACKS FROM UTILITIES AND STRUCTURES ARE CONCEPTUAL. ACTUAL SET BACKS SHALL BE BASED ON VENDOR REQUIREMENTS, STATE AND LOCAL BUILDING AND FIRE CODES, AND THE CONTRACTOR'S NYS PE DESIGN.
 4. STRUCTURAL CONFIGURATION (INCLUDING OVERHEAD AND PERSONNEL DOORS) DETERMINED BY CONTRACTOR OPERATIONS.
 5. CBW INSTALLATION, SHALLOW EXCAVATION (UPPER TWO FEET IN LIGHT SHADED AREAS), AND 89 WILLOW AVE. EXCAVATION (DARK SHADED AREAS) MAY BE COMPLETED OUTSIDE THE TEMPORARY FABRIC STRUCTURE. OTHER ODDR CONTROL METHODS MUST BE UTILIZED. EXCAVATED MATERIAL MUST BE IMMEDIATELY STOCKPILED IN THE TEMPORARY FABRIC STRUCTURE LOCATED ON THE O2Z PROPERTY.



1
C-06
CONCEPTUAL TEMPORARY FABRIC STRUCTURE
PLAN VIEW NOT TO SCALE



1
C-06
CONCEPTUAL TEMPORARY FABRIC STRUCTURE
PROFILE VIEW NOT TO SCALE

89 WILLOW AVE. EXCAVATION AREA COMPLETED OUTSIDE TEMPORARY FABRIC STRUCTURE (SEE NOTE 5)

SHALLOW EXCAVATION MAY BE COMPLETED OUTSIDE TEMPORARY FABRIC STRUCTURE (SEE NOTE 5)

ISSUED FOR BID

<p>AECOM</p> <p>NATIONAL GRID FORMER CLIFTON MANUFACTURED GAS PLANT</p> <p>CONCEPTUAL TEMPORARY FABRIC STRUCTURE LAYOUT</p>	
<p>DRAWING NUMBER: C-06</p>	<p>DATE: 07/08/11</p>
<p>SHEET NUMBER:</p>	<p>PROJ. NO.: 60137363-20</p>
<p>REVISION 1 0</p>	<p>ISSUE DATE</p> <p>REVISION</p> <p>ISSUED FOR BID</p> <p>DATE</p> <p>PERSON</p>

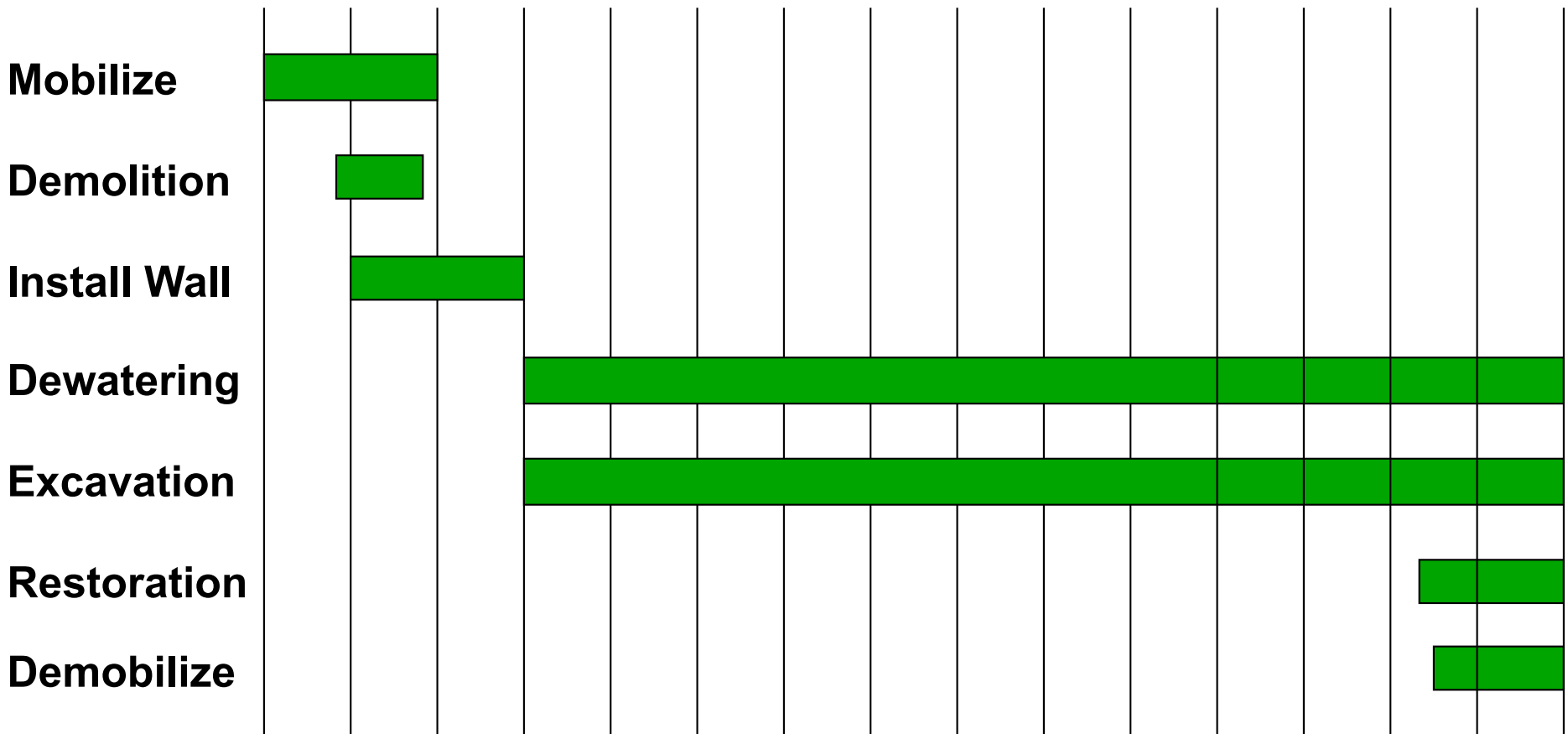
18c of the City of New York, Chapter 24 of the Rules of the City of New York, Section 24-209, requires that a copy of this drawing be filed with the Department of City Planning, 115 West Street, New York, NY 10038.

Schedule

2012

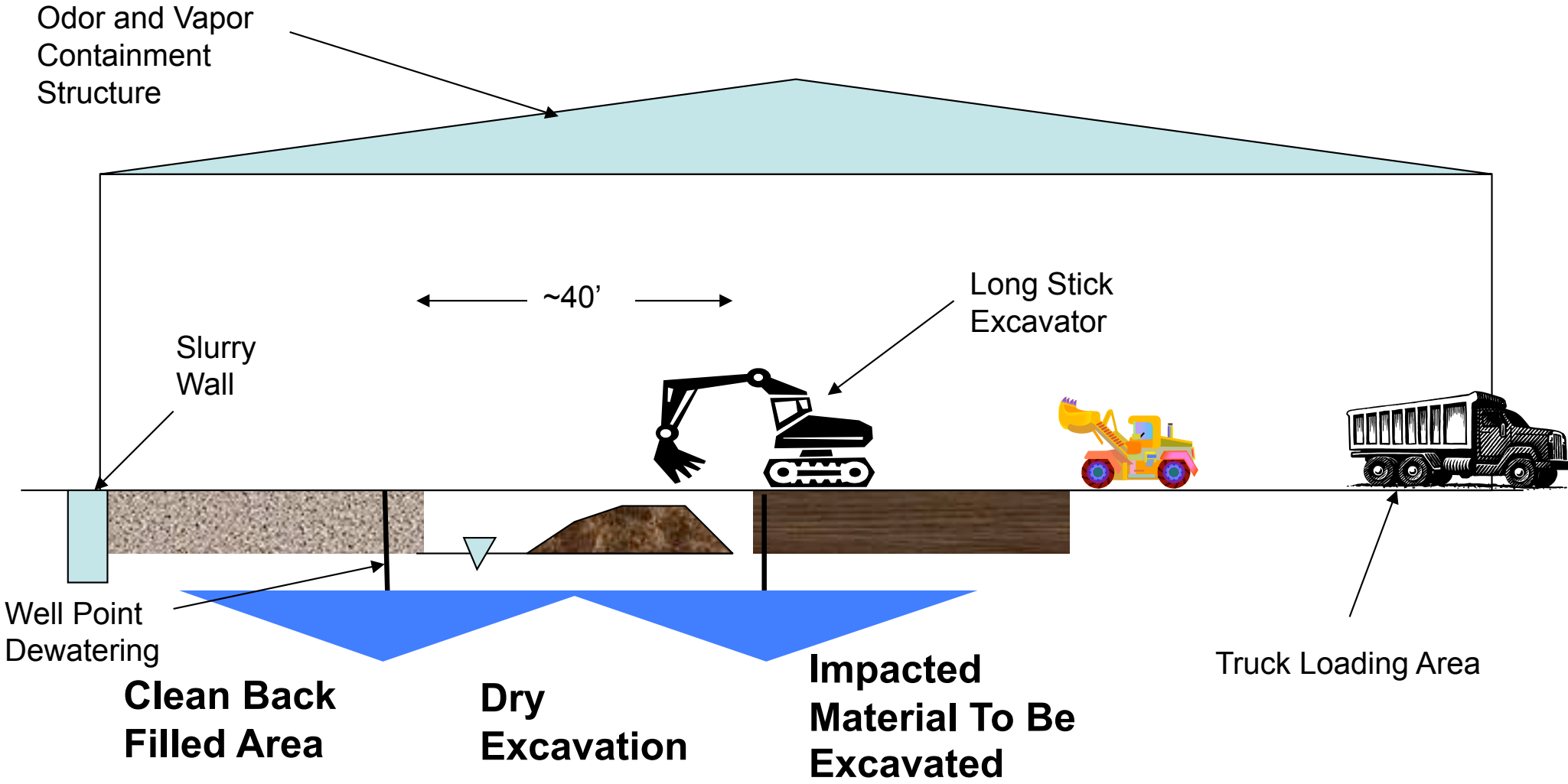
2013

Jan Feb Mar Apr May Jun Jul Aug Sep Oct Nov Dec Jan Feb Mar



Station 3: Environmental Controls

Excavation Approach



Fabric Structure



Noise Monitoring Locations



NATIONAL GRID
FORMER MANUFACTURED GAS PLANT
60137363-430

PROPOSED NOISE MONITORING LOCATIONS

DATE: 06/2011

FIGURE 2-1

Vibration Monitoring Locations

- APPROXIMATE LOCATIONS OF VIBRATION MONITORING STATION

S1 RECEPTOR LOCATION

S1 SETTLEMENT MONITORING LOCATION



NATIONAL GRID
FORMER MANUFACTURED GAS PLANT
60137363-430

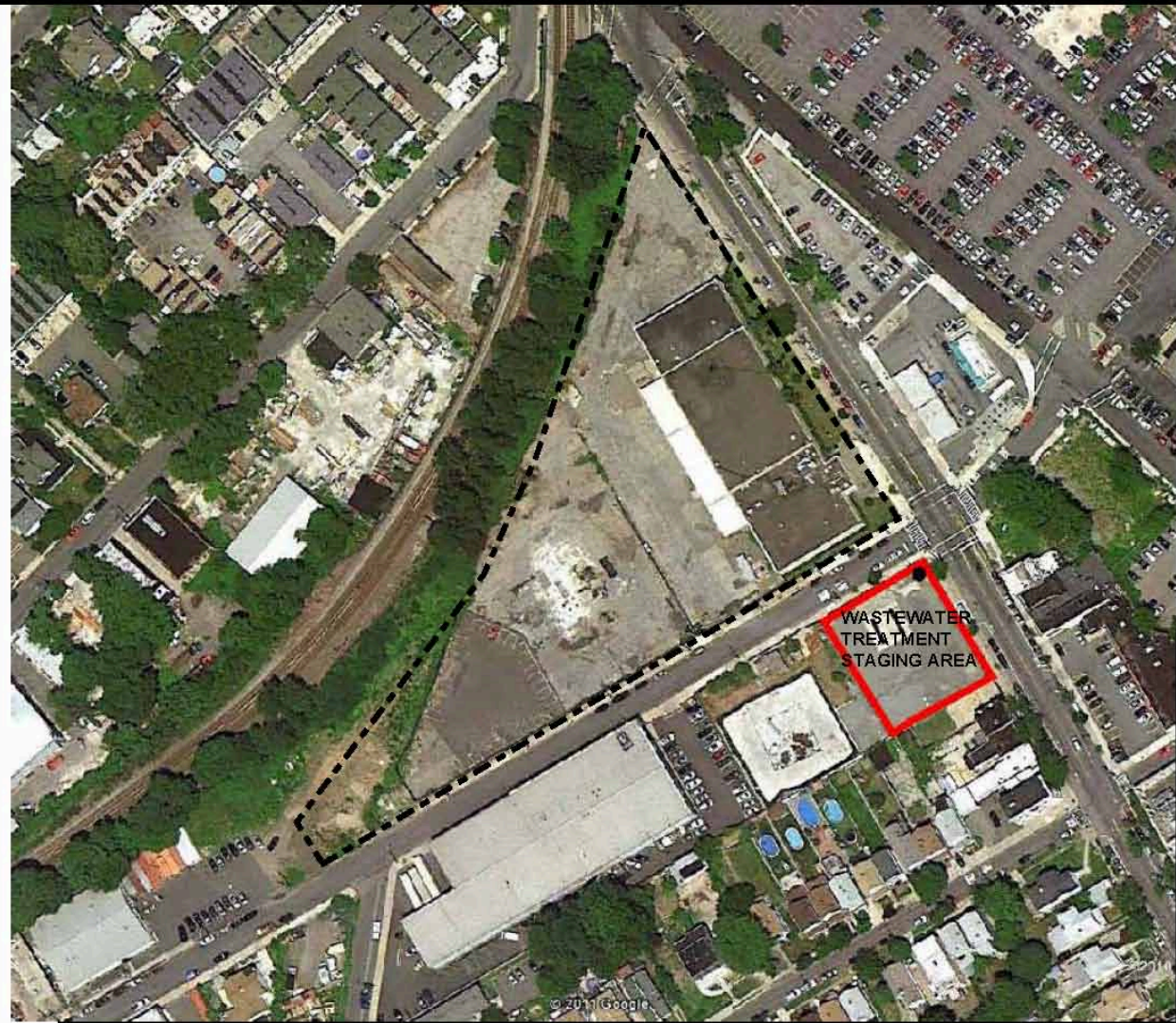
PROPOSED VIBRATION AND SETTLEMENT
MONITORING LOCATIONS

DATE: 06/2011

FIGURE 2-1

Treated Water Monitoring Locations

- APPROXIMATE LOCATION OF CONSTRUCTION WATER MONITORING STATION



AECOM

NATIONAL GRID
FORMER MANUFACTURED GAS PLANT
60137363-430

PROPOSED TREATED CONSTRUCTION WATER
MONITORING LOCATIONS

DATE: 12/2011

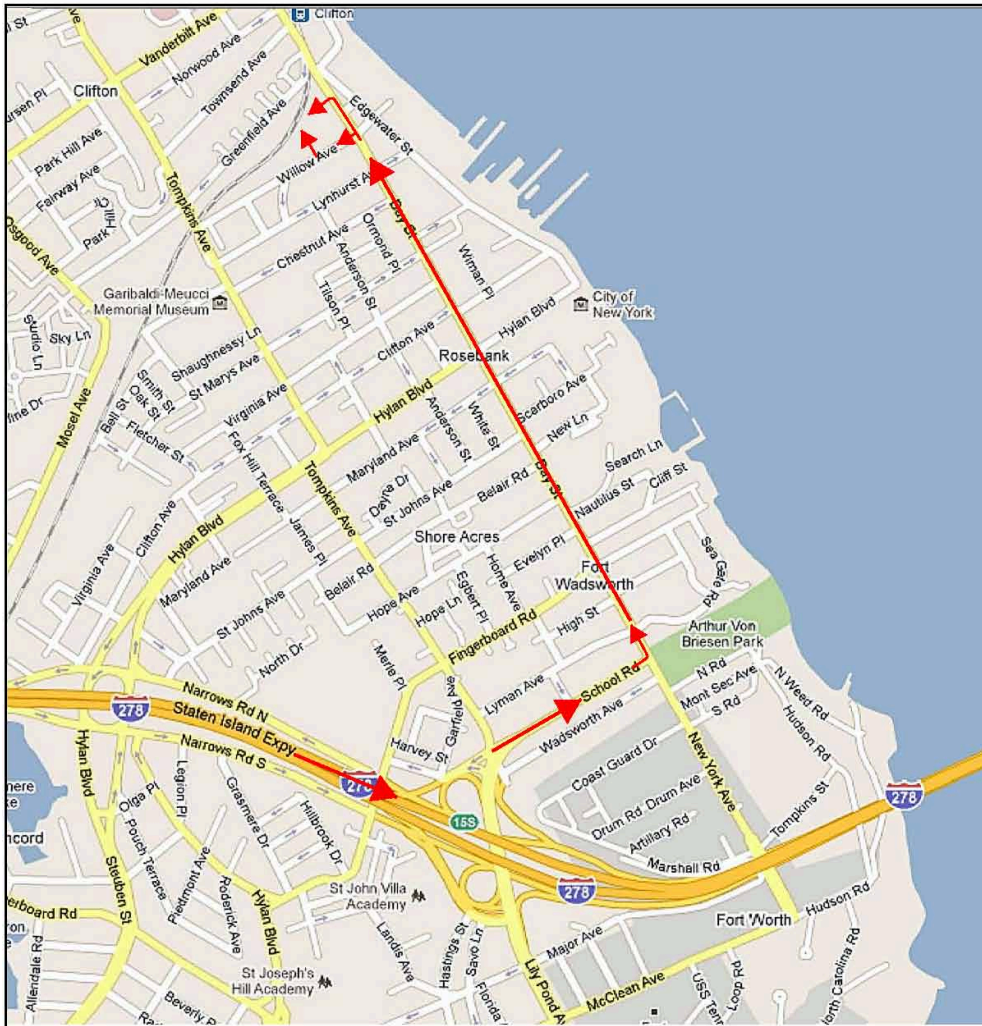
FIGURE 1

Station 4: Traffic and Site Controls

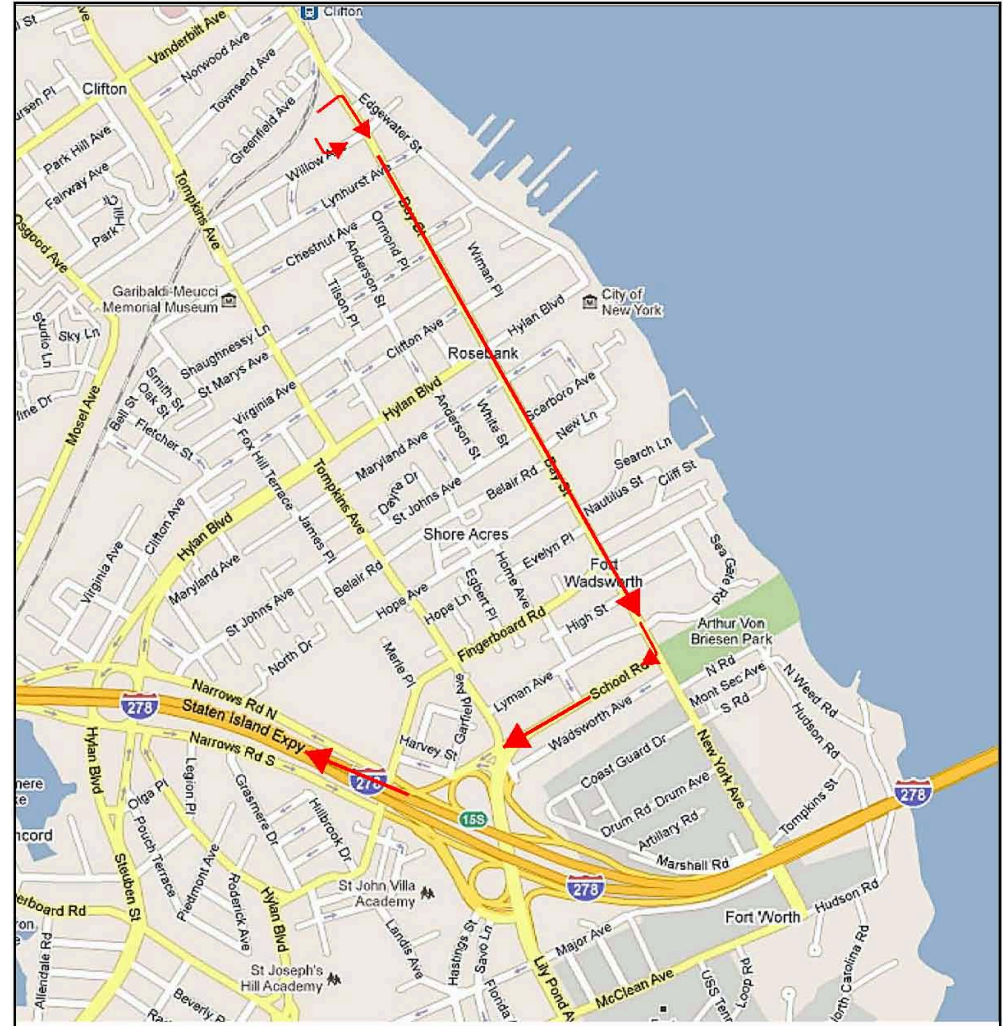
Sidewalk Closures and Parking



Trucking Routes

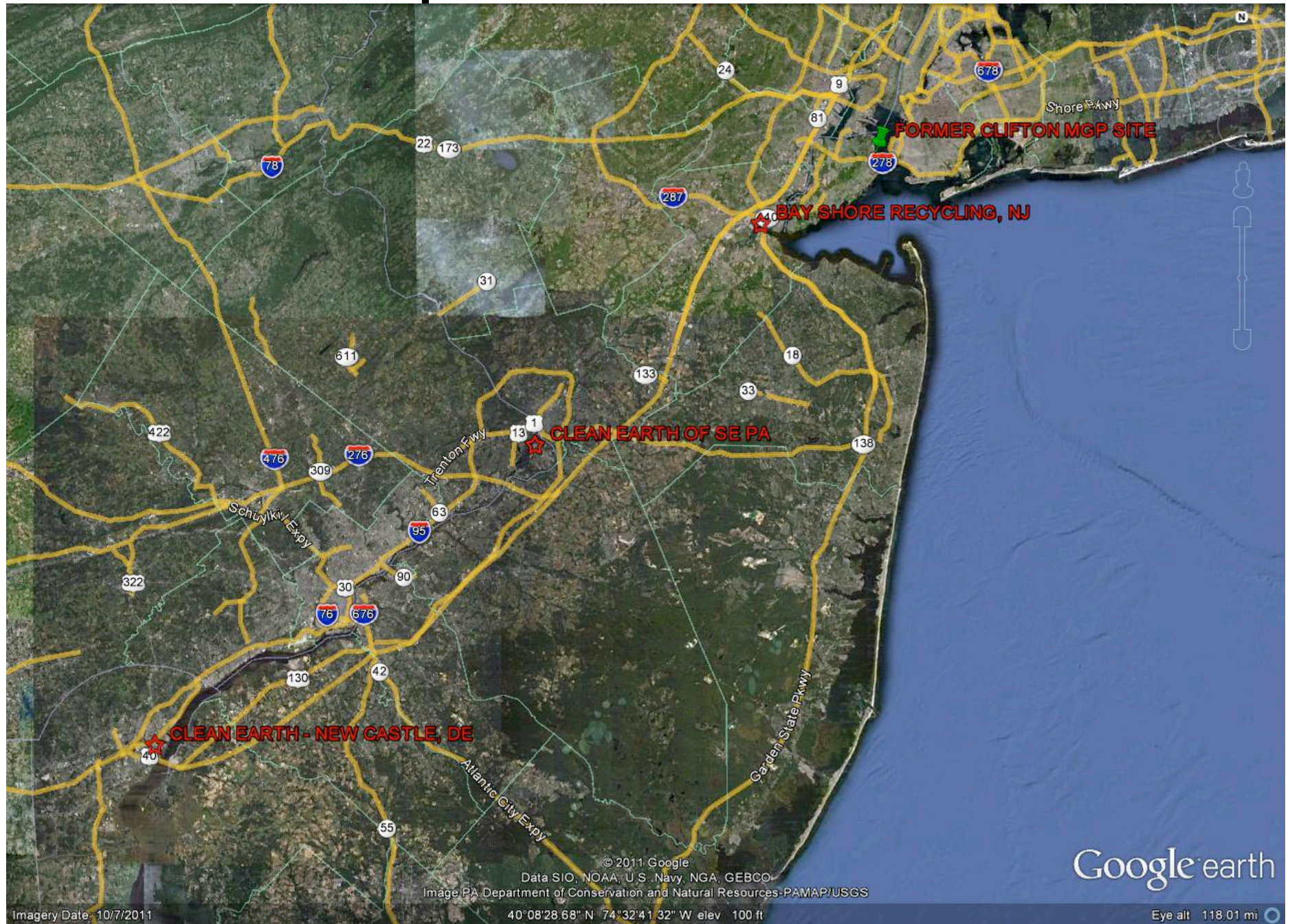


NATIONAL GRID FORMER MGP SITE - OU2 CLIFTON, NEW YORK	TRUCKING ROUTE - EXIT
DATE: 16/02/2011	FIGURE 2



NATIONAL GRID FORMER MGP SITE - OU2 CLIFTON, NEW YORK	TRUCKING ROUTE - EXIT
DATE: 16/02/2011	FIGURE 2

Disposal Locations



Trucking Approach

